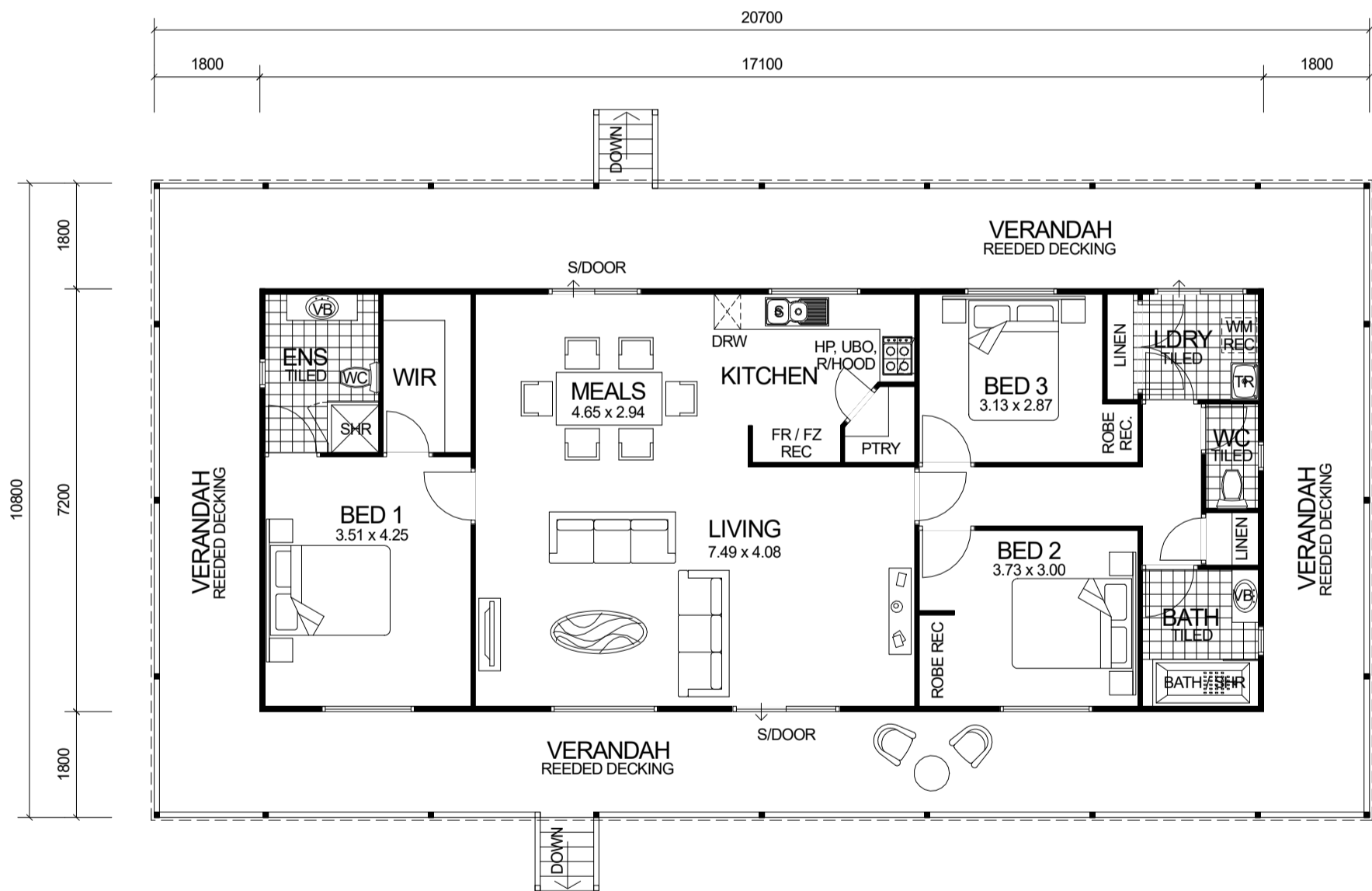


# HOMESTEAD SERIES



## DESIGN FEATURES

- SMART GLASS TO ALL ALUMINIUM WINDOWS & DOORS IN CLIMATE ZONES 4 & 5.
- STAINLESS STEEL APPLIANCES.
- WALK IN PANTRY.
- 1200W VANITY BASIN TO ENSUITE.
- 2.4m CEILING LEVEL.

3 BEDROOM x 2 BATHROOM

## "HOMESTEAD SERIES"

NOTE: LOCK UP KITS CAN BE SUPPLIED ON ELEVATED SUB-FLOOR SYSTEM OR CONCRETE SLAB.

GETAWAY HOMES © COPYRIGHT

### OVERALL SIZE

WIDTH: 10.80m  
LENGTH: 20.70m

### AREA

HOUSE: 123.12m<sup>2</sup>  
VERANDAH: 100.44m<sup>2</sup>  
TOTAL: 223.56m<sup>2</sup>