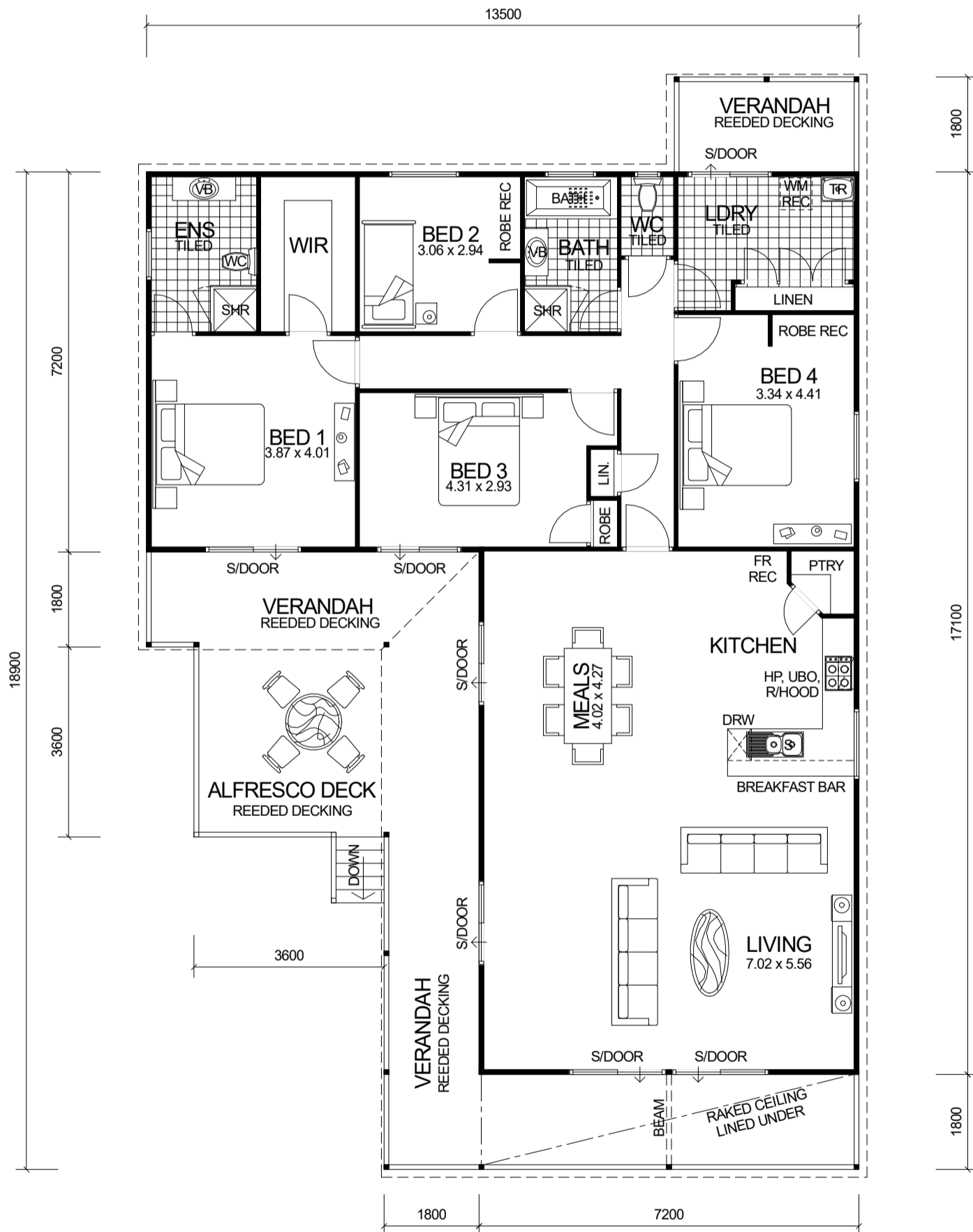


PANORAMA SERIES



DESIGN FEATURES

- SMART GLASS TO ALL ALUMINIUM WINDOWS & DOORS IN CLIMATE ZONES 4 & 5.
- STAINLESS STEEL APPLIANCES.
- WALK IN PANTRY.
- BREAKFAST BAR.
- 1200W VANITY BASIN TO ENSUITE.
- ALFRESCO DECK 3.6m x 3.6m INCLUDED ON STUMPED HOMES.
- LINED & RAKED CEILING TO FRONT VERANDAH.
- 2.4m CEILING LEVEL.

4 BEDROOM x 2 BATHROOM - VERSION 2

"PANORAMA SERIES"

NOTE: LOCK UP KITS CAN BE SUPPLIED ON ELEVATED SUB-FLOOR SYSTEM OR CONCRETE SLAB.

GETAWAY HOMES © COPYRIGHT

OVERALL SIZE

WIDTH: 13.50m
LENGTH: 18.90m

AREA

HOUSE: 168.48m²
VERANDAH: 48.42m²
ALF. DECK: 12.96m²
TOTAL: 229.86m²